



HEALEY SCHOOL

EXCELLENCE / OPENNESS / CREATIVITY / JOY



TABLE OF CONTENTS

Healey Admin/Contacts	4
About the Healey School	5
The Healey Mission	5
Healey Foundational Principles.....	5
Healey Core Values	6
Healey Educational Philosophy.....	7
Innovative Academic Practices	8
Measuring Effectiveness and Outcomes	8
Culture/Positive Behavior Management.....	8
Student Supports	10

Healey Community Groups	12
Site Council.....	12
Healey PTA.....	12
Friends of Healey 5013c Non-Profit	12
Community Meetings.....	13
Healey Family Directory.....	13
Things to Know	13
Afterschool Programs	14

WELCOME

Welcome to the Healey School!
We are excited that you have decided to become - or are considering becoming - a part of our community. This handbook is a guide for the staff, parents and guardians of children at the Healey School. It summarizes our philosophy and explains what parents, guardians and staff should know about the Healey School.

This Community Handbook is produced by Friends of Healey.
More information available at www.friendsofhealey.org



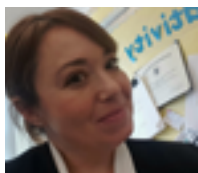


HEALEY SCHOOL ADMINISTRATION

Front Office: 617-629-5420

5 Meacham Street, Somerville 02145

www.somerville.k12.ma.us/schools/arthur-d-healey-school-pk-8



Principal

Jenna Cramer

jcramer@k12.somerville.ma.us



Assistant Principal

Christopher Glynn

cglynn@k12.somerville.ma.us



Dean of Students

Steve Celestin

scelestin@k12.somerville.ma.us

pale kreyòl ayisyen



Secretary

Marie Baxter

mbaxter@k12.somerville.ma.us

HEALEY SCHOOL FAMILY LIAISON

Heidy Castro

HCastro@k12.somerville.ma.us

Habla español

PARENT/GUARDIAN GROUPS

The Healey School is unique in that we have two parent groups that serve separate roles, but work closely together to build community and support experiential learning. There are plenty of opportunities to volunteer with both groups throughout the year.

Friends of Healey 501 c3 Non-Profit

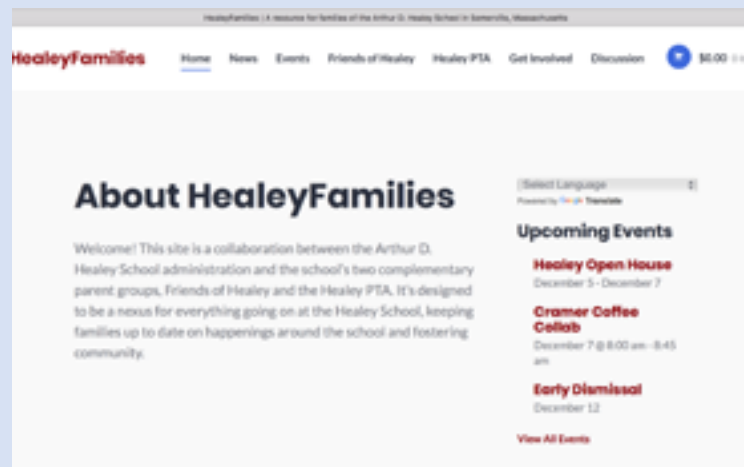
www.friendsofhealey.org

Contact: president@friendsofhealey.org

PTA

Contact: HealeySchoolPTA@gmail.com

Find out more at: www.HealeyFamilies.org



ABOUT THE HEALEY SCHOOL

The Healey School is a pre-K-Grade 8 school in the Somerville Public School system.

The Healey School embraces the philosophy that children learn best when excited by their work through projects, essential experiences, and positive relationships. We marry interdisciplinary, creative projects and themed units with targeted, direct instruction. Our teachers choose methods, materials, and guidelines that match a particular child, or group of children, at a particular time within a particular context. We believe that parent involvement is directly related to a child's success in school and seek to involve parents in both the planning and implementation of all facets of the Healey School.

The Healey Community reflects the diversity of the city of Somerville, with over 50 different nationalities represented in our families and staff. The Healey strives to recognize and celebrate the diversity of backgrounds, learning styles and interests and invites everyone - families, staff and community members - to participate in and collaborate on activities at the Healey. Our Mission, Foundational Principles and Core Values guide administration, staff, families and students in all that we do at the Healey.

THE HEALEY MISSION

The Healey School is an innovative participatory learning community. Academic competence is highly valued, and we believe that children learn best in a joyful, creative environment, one in which their natural curiosity, imagination and thinking are encouraged. Our curriculum is based on thematic, project based learning, designed to engage children's interest and best efforts.

We are committed to an educational program which recognizes the importance of community in the lives of children. Three aspects of our program are evidence of this commitment:

- **Creative Arts:** Participating in writing, dance, music, theater, film/video and visual art are vital and integral parts of our curriculum. The arts are

essential to learning, a way for children to “represent” the world around them and celebrate who they are as individuals and as a community.

- **Effective Community Service:** Inspiring a life-long sense of civic participation, openness, caring and responsibility is an integral part of our school culture. Students apply academic skills and critical thinking as they develop, implement, and evaluate service learning projects at all grade levels.
- **Family Involvement:** Families who join our school community become committed partners in their children's education, both supportive of and supported by our dedicated staff. Parents and students are encouraged to be active participants in the governance of our school.

HEALEY FOUNDATIONAL PRINCIPLES

The foundational principles of the Healey School are the practices and goals that underlie the mission and are embraced and embodied by our community of staff, parents and guardians.

- Student-centered learning, an emphasis on students group work, project-based learning, guided discovery and a variety of instructional styles.
- Looping, mixed grades and flexible grouping when appropriate.
- Experiential learning, high-quality field trips and out-of-school experiences such as Nature's Classroom.
- A focused emphasis on early literacy intervention with the stated goal that all students read at or above grade level.
- Flexible student groups that provide advanced students with opportunities for more challenging work and targeted remediation for students who are behind.
- Parent/guardian involvement in instructional activities (when appropriate) in the classroom.
- A parent/guardian on every teacher/administrator-hiring committee.
- Parent/guardian involvement through subcommittees of the School Council, active working groups, and an organization such as a Community Council to build community, share information and provide a forum for parent/guardian input on issues affecting the school.

- Strong community connections and university partnerships.
- A balance between students who are residents of the Healey School neighborhood and from the rest of the City of Somerville.
- Embracing diversity, fostering tolerance, empathy, and mutual care; recognizing each individual for his or her own abilities, interests, needs and cultural identity.
- Meeting and surpassing district academic expectations (with the ultimate goal of college admission for all students in the program).
- Our teachers and students are encouraged to innovate new approaches to teaching and learning, allowing them to adapt quickly to challenges and meet their educational goals.
- All our practices and structures are embedded in a cycle of reflection and improvement.

HEALEY CORE VALUES

These values are the foundation of the life of our school and the basis of our decision-making and our relationships with one another. They represent our desire to create a caring and just school community that reflects the broader democratic ideals of our society as well as what is unique about our own neighborhood. All members of our school community (students, teachers, family, administration, staff and community partners) are responsible for caring about and acting on these values in order to keep them alive in our school. As a community we are committed to promoting them in all aspects our school life (in the classroom, the corridors, on the playground, before, during and after school) and celebrating their expression.

EXCELLENCE

A high quality educational experience is essential for our learners. Through our high academic standards, students will be well prepared to continue their educational pursuits beyond graduation. We understand that our students have individual learning needs, and we provide differentiated learning practices so that all our students have the opportunity to excel. Parents and families at Healey school receive meaningful communication and support from the Healey professional staff and are encouraged to become active partners in their child's education.



EXCELLENCE

“I want to be challenged and helped when I need it, so I can learn and know as much as I can. I want to learn a lot of ways.”

OPENNESS

“I want to be who I am at school and not be laughed at. I want to feel like I count.”

CREATIVITY

“I want my work to show who I am as a unique individual”

JOY

“I want to be able to come to school in the morning looking forward to it and feeling happy. I would like to see myself grow by having fun and learn at the same time.”

OPENNESS

Our school community is built on caring and respectful relationships. We value our diversity and create a school culture where all members of our community feel respected, appreciated, and cared about as individuals. Our staff is dedicated to making each family feel welcome and well served in every aspect of their connections with the school. Through programs like Open-circle, Second step, and peer mediation, our students are constructively taught to resolve problems. Through collaborative learning, our students create deep and intimate relationships with one another. Our commitment to Service Learning strengthens our community and teaches us to be respectful and empathic individuals.

CREATIVITY

Creativity is the ability to come up with original ideas which have value. Our project-based interdisciplinary curriculum encourages divergent thinking and nurtures original thought. We believe that the ability to innovate and think “out-of-the-box” are critical skills, which are measured by a student’s ability to look at problems in many different ways and come up with many different solutions. Our integrated arts curriculum puts creative collaborative learning into the every day life of our learners.

JOY

Healey School is an inspiring and joyful learning environment. As a learning community, we challenge each other to grow and learn continuously both academically and personally. We believe that children are born with an intrinsic desire to make sense of the world and it is our responsibility to keep this love of learning alive and to nurture it as a life-long disposition. Students and teachers who love learning are excited about new ideas and embrace opportunities for dialogue and discussion.



HEALEY EDUCATIONAL PHILOSOPHY

The Healey School strives to assure that all children reach their fullest potential through educational experiences that enhance intellectual, social-emotional, physical, and creative development. As a Somerville Public School, the Healey School follows the Massachusetts Curriculum Frameworks and emerging Common Core Curriculum. Accordingly, all students are held to high academic standards in reading and language arts, math, science, and social studies. Healey staff embrace and apply a number of teaching methods and practices that provide students a vibrant, joyful, creative learning experience:

- **Project-Based Learning:** Students work in small groups on using technology and critical thinking to solve problems and challenges.
- **Theme-Based Learning:** Covers the same topic across core areas such as reading, writing, math, history, science, and the arts so students can delve deep into topics.
- **Differentiated Instruction:** Teaching methods should be tailored so that students who are behind, students who are on schedule, and students who are ahead can progress at their own level and using their own learning styles in the same classroom.
- **Arts Integration:** Inclusion of the fine arts and dramatic arts into the teaching of academic subjects to enhance learning.
- **Service Learning:** Having students engage in projects help others while at the same time learning academic subjects.
- **Instructional Focus on Reading Comprehension:** Teachers use the cycle of effective instruction in order to show measurable student growth.
- **Reading Buddies:** Teachers encourage student mentoring by pairing older, accomplished readers with younger readers to reinforce the power and joy of reading.
- **Offsite Learning:** Teachers take their students out of the classroom for hands-on and experiential learning opportunities. These can range from something as simple as a walk in the neighborhood to an overnight trip at a nature reserve or historic site.

INNOVATIVE ACADEMIC PRACTICES

The Healey School has a history of pilot-testing and implementing innovative academic practices that at times have eventually become district standards (such as use of the TERC math curriculum, and the piloting of STEAM programs with Powderhouse Studios). With approval from the Healey School Site Council, Healey teachers may propose to pilot new programs or to opt out of standard district programs. These proposals require approval from the Superintendent and/or School Committee.

MEASURING EFFECTIVENESS AND OUTCOMES

The Healey School aspires to create an atmosphere of school-wide self-reflection and evaluation. To ensure that the endorsed teaching methods are effective, staff will take several approaches to assessing their effectiveness:

- **Diagnostic Tests** – tests such as DIBELS, used by teachers several times per year to first identify initial student capability and specific areas requiring support, and then to confirm growth after support has been provided.
- **Massachusetts Comprehensive Assessment System (MCAS)** – state-wide standardized tests that measure student proficiency in English Language Arts, Math, and Science.
- **Balanced Metrics** -- ways to measure the capabilities of “the whole child” — creativity, critical thinking, meta-cognitive skills, perseverance, artistic expression, as well as academics.

CULTURE/POSITIVE BEHAVIOR MANAGEMENT

The Healey School behavior management plan is community based. It is a collaboration of teachers and students, families, administrators, and staff

in the spirit of mutual respect and caring, and reflects our School values of openness, excellence, creativity and joy.

At Healey we are committed to positive, proactive behavior assessment and management. Our focus is on reinforcing positive behavior rather than punishing negative behavior; and on understanding and addressing the root cause of negative behavior including skill deficits. The goal of our behavior management plan is to help Healey students grow in self-respect, empathy, confidence, and ethical behavior to foster development of both personal and community accountability.

Administrators, teachers, and parents work together to guide our students as they develop age-appropriate social skills—through peer support programs, Open Circle, Second Step, in-class group discussions, creative projects, PBIS and other strategies. PBIS is Positive Behavioral Interventions and Supports. The concept is to use evidence-based practices for creating a positive school culture that promotes positive behavior. The key components are explicitly teaching the expected behaviors and consistency of expectations across the building. The language and reminders are positive with a ratio of more positive interactions with students than negative. The reinforcements are to acknowledge and support students as they follow the expectations and to give staff a way of actively using the consistent language to reinforce the expected behaviors in the school.

Teachers are provided a forum in which to share ideas on effective strategies, explore new approaches and receive professional development training in the School’s framework. Regular communication between teachers and parents on children’s social development is integral.

We discourage collective punishment for the actions of one or a few students and counterproductive measures such as loss of recess except when safety is at issue. In situations where students need additional behavioral direction and support, the Healey’s overall approach is collaborative and

FACING PAGE: Top left: Students enjoy an overnight stay at the Nature’s Classroom site in Yarmouth Port. **Top right:** Healey fourth graders experience farm life at Red Gate Farm in western Massachusetts. **Bottom left:** In 2013, in recognition of our thriving school garden, five Healey students were honored with an invitation to the White House to garden with First Lady Michelle Obama. **Bottom right;** Middle Grade students visit Washington, D.C.



THINK OUTSIDE THE CLASSROOM

Offsite learning and community involvement are hallmarks of a Healey education



creative, engaging the child in problem-solving discussions and treating the challenging situation as an opportunity for the child to build social skills and self-monitor to the fullest extent possible.

The Healey community includes more than 45 nationalities and 20 languages. Our behavior management plan emphasizes School-wide awareness of and respect for and openness to this cultural diversity. The plan recognizes students as participating, responsible members of their classroom and the School community at large.

At the Healey School an element of the excellence we promote is how we respect and look out for one another. We appreciate and value equally all of the diverse cultures in our community. We have zero tolerance for bullying in any form. And we all do our part: Healey staff, students, and family share responsibility for making our community welcoming, joyful and safe for all.

STUDENT SUPPORTS

GUIDANCE COUNSELOR

Guidance is an essential and vital service at The Healey. Our counselor is available to students, parents/guardians, faculty, and staff to assist in any way possible. Counselors are ready to listen, give advice, and confer with students, parents/guardians, and faculty.

Meetings are frequently conducted throughout the school year to discuss a variety of situations aimed at assisting students and ensuring academic success. Passes are required for students visiting the Guidance Office. Appointments may be made during a time that is mutually agreed upon between the counselor, teacher and student. Parents/guardians may call the school to arrange an appointment with one of the counselors, or to request that the counselor arrange a meeting with the teacher(s).

ADJUSTMENT COUNSELOR

The Adjustment Counselor works specifically with children on Individual Education Plans (IEP's) to provide individual and group counseling services as well as social skills training through the special education department.

MEDIATION

Mediation is available to all students at the Healey School when issues arise due to peer conflicts. The goals of mediation is to facilitate healthy communication and respect between involved parties and come to a mutually agreed upon resolution. Referrals can be made by teachers, counselor, parents or students. Referral forms can be found in the front office.

OTHER SERVICE PROVIDERS (INTERNAL/EXTERNAL):

Somerville Mental Health Association/Riverside Community Care is in partnership with the A.D. Healey School. We provide an array of support services to students, parents/guardians, and school personnel. Support services include student support, peer enrichment groups, teacher consultation, parent consultation, risk management, and case management as needed, desired, and requested.

In addition, SMHA clinicians are available to provide outside therapy services including In-Home Therapy and Outpatient Therapy. These services can be flexible to meet the needs of the family and can take place in the home, school, community or at the clinic.

SCHOOL ATTENDANCE OFFICER

The school attendance officer works with the student support team to ensure that children are coming to school on a regular basis. Attendance is looked over daily, and if there are any concerns or patterns, the attendance officer may make a home visit to help the child and family maintain regular school attendance. The School Attendance Officer is available to communicate with students, parents/guardians, faculty, staff, community members, and administrators on a wide variety of concerns.

REDIRECT

Redirect is a valuable resource available to students when they need to take a break away from class. It is supervised and run by a staff member who has been trained in behavior management. Students are sent to redirect on a referral from their teacher or self-referral in some cases. Redirect can be used as a behavior management tool to help students learn appropriate school behaviors and as a time for self-reflection and/or class work completion in a separate environment as needed. If your child was sent to re-direct in any given day, you will receive a call home explaining the reasoning.

THE HEALEY COMMUNITY AND PARENT INVOLVEMENT

The Healey invites parents to become active participants in the planning and implementation of activities in the classroom and in the school. They are encouraged to participate in both the classroom and in the governance of the school that depends heavily on its volunteers to maintain its vitality.

PARENTAL INVOLVEMENT IN THE CLASSROOM

Teachers determine how to utilize parent volunteers in the classroom; the range and scope of volunteering varies from class to class. Many Healey parents assist teachers by reading with children, working with students at the computer, sharing their musical talents, etc. Other parents enrich the educational life of the classroom by offering their expertise in a particular subject. Parents may choose to chaperone field trips or work on theatrical productions. Interested parents should speak with their classroom's teacher about ways to become involved in the class.

Parent participation contributes greatly to the success of the Healey. The commitment to education that families bring to Healey is evident throughout the community particularly – although certainly not only -- in the kinds of experiences parents make available to our children and in the day to day exchanges parents have with one another and teachers. Both teachers and parents take pride in maintaining respect for the privacy of children and families.

For safety reasons all volunteers must first sign in at the front office, where they will receive a visitor's badge before proceeding to the classroom. To make the volunteer program function effectively, the following guidelines have been developed:

1. Early in the school year requests for volunteers may be made by individual teachers. Parents may also offer their services either informally or in response to a distributed questionnaire.
2. Student confidentiality must be respected. Information about a child's

academic performance or behavior cannot be shared with other parents, children, or members of the community.

3. Parent volunteers must abide by the disciplinary rules established by the teacher. Only teachers should discipline children in the class.
4. All parents must recognize that decisions about volunteers in the classrooms and the nature of their participation are ultimately to be made at the discretion of the teachers. For example, it might not be beneficial for a child to have his/her own parent lead that child's book group. At other times it might prove to be a satisfactory arrangement. In some volunteer opportunities only one parent at a time would be needed; other times, more could be helpful.
5. Parent volunteers must submit a CORI form for a background check at the beginning of each school year before volunteering.
6. All parent volunteers should contact the volunteer coordinator, who both tracks and places volunteers in the school. Parent can also directly coordinate with teachers, however it is important for the volunteer coordinator to keep track of volunteers to insure support is equally distributed throughout the school.

PARENT PARTICIPATION OUTSIDE THE CLASSROOM

The Healey provides several avenues for the parent who wants to participate outside the classroom. These parents can collaborate through the Friends of Healey Organization, which meets once a month throughout the school year. The Healey has a Parent-Teacher Association (PTA) that supports the school as well as the Friends of Healey non-profit, as well as committees and coordinators. All these groups are encouraged and welcome to collaborate through the Friends of Healey.

The Healey School is fortunate to have many vehicles for community leadership and volunteerism, including the Friends of Healey Organization, a Parent Teacher Association (PTA), a Site Council, and other Action Teams focused on specific initiatives. All groups share a commitment to collaborate together in the best interest of the students and the Healey community.

HEALEY COMMUNITY GROUPS

SITE COUNCIL

The Site Council is a state-mandated elected body of an equal number of parents/guardians and teachers/staff, as well as community members appointed by the Principal. The Site Council is focused on the educational needs and goals of students and the school, budgets, and school improvement. Although members of the community are welcome to meetings, only elected members have voting rights. The Site Council is one of the primary decision making bodies in the school, in addition to administration.

HEALEY PARENT GROUPS

The PTA and the Friends of Healey are both Healey community organizations; however, they operate differently and support the school in unique and complementary ways.

Find out more at www.healeyfamilies.org

PARENT TEACHER ASSOCIATION (PTA)

The PTA is a chapter of the National PTA, the largest volunteer child advocacy association in the nation. The National PTA requires its chapters to be a membership organization and to charge its members associated dues. The Healey PTA can connect the Healey to resources from the National PTA, as well as to the activities of all the Somerville district school PTAs. At the Healey, the PTA is known for organizing community events and fundraisers, such as Books for Bingo, the Scholastic Book Fair, and the Apple for Teachers fundraiser. In the past, the PTA has used the money it has raised to fund community activities, books for students, and reimbursements for teachers. The PTA sponsors the beginning of the year Open House (or curriculum night) as well as three Parent-Teacher Conferences (fall, winter, spring) all which are preceded by a community wide PTA meeting where the board of officers report on the PTA activities and provide the treasurer's report. The PTA is led by a board of elected officers; most planning and decision making is done by this board of officers at meetings that are not attended by PTA members.

FRIENDS OF HEALEY

The Friends of Healey Organization (FoH) is an independent group, not associated with a national organization like the PTA. All Healey staff, parents, and administrators are members of the FoH, and there is no membership fee. The goal of the FoH is to realize the mission and vision of the Healey School through collaboration by planning events, fundraising for activities, and creating infrastructure for coordination and communication.

The creation of the FoH was recommended by the school committee and established by the Healey Site Council to foster parent involvement at the Healey School. The FoH is run by a team including the principal, parent chairs (nominated and elected) and staff liaisons to FoH. All are invited to share concerns and ideas at community meetings. There are many committees and chair roles that operate within FoH, from enrichment and the garden to hiring and room parents. FoH activities include creating and distributing the Healey Family Directory, Arts Festival fundraising event, lunchtime concerts, and hosting community meetings.

FRIENDS OF HEALEY 5013C NON-PROFIT

The Healey has a fundraising vehicle, in addition to the PTA, called the Friends of Healey Non-Profit (FoH-NP). The FoH-NP 5013c non-profit is the vehicle for fundraising and administration of funds for large trips (Nature's Classroom and 7/8 New York City trip, for instance) as well as field trip subsidies, enrichment activities (such as lunchtime concerts and assemblies) and major community-wide arts projects such as the mosaic mural and mandala. The FoH-NP is run by a board of officers. The budgets and plans for the FoH-NP are informed by community input through the Community Meetings. As a 5013c non-profit, the FoH-NP can directly apply for grants (versus going through the district). In the past, the FoH-NP and the PTA have also co-funded activities: for example the teacher appreciation luncheon and teacher reimbursements.

COMMUNITY MEETINGS

All members of the Healey community are invited to the Community Meeting. This meeting is organized and run by Friends of Healey leadership and includes updates from administration and staff as well as time for discussion of concerns and opportunities. For example, if Site Council is considering a structural change to the school they may bring it to the Community Meeting for input and feedback. Parents or staff may bring concerns to Community Meeting. It's also fun and a time to come together!

HEALEY FAMILY DIRECTORY

Each year a comprehensive directory of Healey students and their parents is compiled and distributed to every family. This directory will include, with permission from families, the names, addresses, telephone numbers, and e-mail addresses of all children and parents in the program. We ask for your cooperation in making sure this directory is complete. The Family Directory is produced and paid for by Friends of Healey.

THINGS TO KNOW

ATTENDANCE

Children are expected to attend school regularly and to be present for the entire learning day. Arriving and leaving on time is important for the smooth running of the school. Please make every effort to have your child to school on time and to pick up your child promptly. Being late is unfair to our teachers and takes away from valuable class time.

PICKING UP YOUR CHILD EARLY

If your child needs to be dismissed early, please notify the teacher in writing at the start of the school day. Report to the main office and your child's teacher will be called. Teachers are not authorized to dismiss children to adults who have not been identified in advance by the child's parents.

ILLNESS

Please keep your child home if he or she has a temperature of 100 or higher, oozing skin rash, green or yellow drainage from eyes, ears, or nose, a productive cough, vomiting, or diarrhea. These symptoms should be absent for a minimum of 24 hours before your child returns to school. If your child has antibiotic treatment, her or she should not return to school for a minimum of 24 hours after starting treatment. If your child becomes ill at school, you will be notified and requested to make arrangements to take him or her home. The Healey School has a full-time registered nurse on site to address health issues at school.

ABSENCES

Please call the Healey School Attendance Hotline (617-629-5421) if your child will be absent. Your call will be answered by a machine that will prompt you for the information to leave. If your child has a communicable disease or other communicable health nuisance such as lice, please leave that information on the machine so that the school nurse can take the proper precautionary steps. Alternatively, you can email the information to Marie Baxter [mbaxter@k12.somerville.ma.us]

SCHOOL CLOSINGS

"No School" announcements are made by telephone to each family home via Somerville's Connect-CTY reverse 311 system and are broadcast on local radio and television stations. Announcements are posted on the SPS website: www.somerville.k12.ma.us. The Superintendent of Schools determines if schools will be open or not. This decision is usually made by 6:00 am.

DROP-OFF/PICK-UP PROCEDURES

At pickup time, parents are asked to remain outside the school building and wait for your child. During the school day, parents are welcome in classrooms for specific events and to meet with teachers. Please sign in at the school office. There you will be given a visitor's pass which will identify you as a parent visitor. Please understand that unannounced visits to classrooms can be disruptive and interrupt the learning process.

FAMILY INFORMATION

The Healey School maintains an emergency contact card for every child in the school. It is important to keep your child's card up-to-date. If you move or change jobs, get a new telephone number or change your name, make sure you give the updated information to the Healey School principal. During an emergency (illness, emergency, early dismissal), it is vital that the school is able to contact you.

LUNCH

Children may bring lunch from home or have lunch at school. Free lunch is available for all students, regardless of family income.

SNACK

Most classes up to Grade 6 have a mid-morning snack in the classroom. Each teacher handles snack in his or her own way and will explain this to the class at the beginning of the year. Some ask that a snack be packed daily. Others ask parents to provide snacks that can be distributed.

BIRTHDAYS

Each teacher handles celebrations in his or her own way and will explain this to the class at the beginning of the year.

PARKING

Parking around the Healey School is scarce. The parking lot is used by teachers and staff. Parents have 5 minute parking along the side of the building. The Healey School is located in a residential neighborhood. Please help the school be a good neighbor by not blocking driveways and exercising courtesy when driving to and from the school. Note also that Street Sweeping occurs from April through Dec on the 1st and 3rd Friday (odd) and on the 2nd and 4th Monday (even).

AFTER SCHOOL PROGRAMS

AFTER SCHOOL AT THE HEALEY

A collaboration of Somerville Community Schools and the Healey School, this program offers a range of after school activities for grades K-6 from dismissal until 5:30 p.m. at the Healey School. Activities include homework help, sports, community building events, and free-time recreation. Tuition is based on a sliding scale. Students can attend the program part-time (fewer than five days/week) or full time, and for K-2 students there is a 4:00 p.m. pickup option. For more information, call 617-625-6600 x6591.

YMCA

Meets students at dismissal and transports them to the YMCA.

ELIZABETH PEABODY HOUSE

Meets students at dismissal and transports them to the Elizabeth Peabody House on Broadway.

MYSTIC LEARNING CENTER

Meets students at dismissal and walks them to the Mystic Learning Center.

PARTS & CRAFTS

Meets students at dismissal and transports them to Parts & Crafts.

